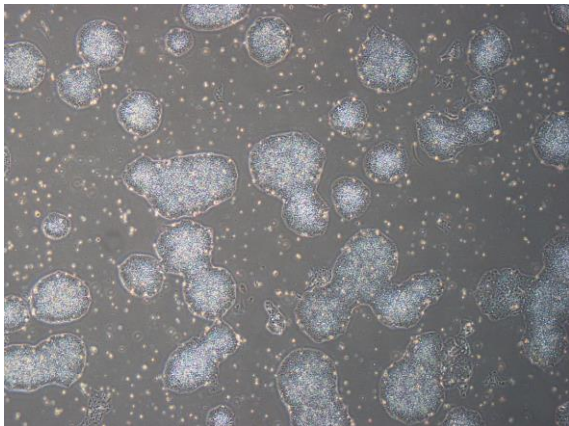
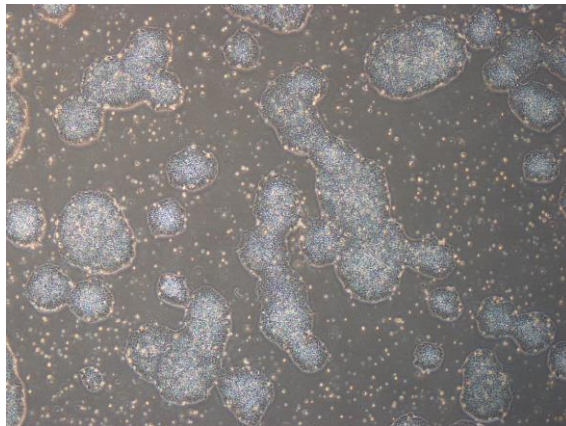


【 CiRA-j-1163 】 Morphology of iPSC colonies

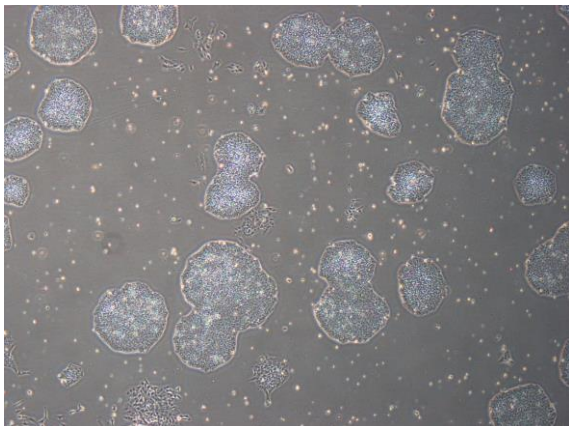
CiRA-j-1163-A: passage-3



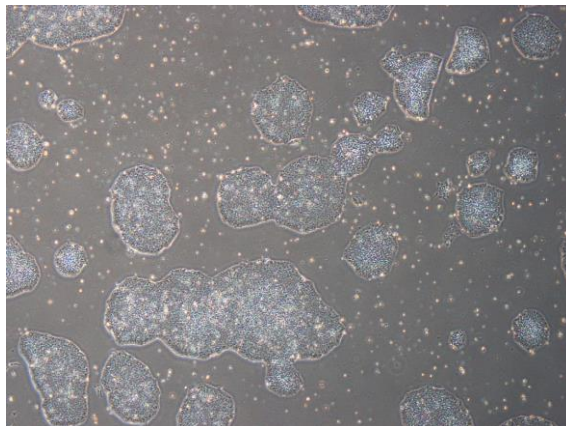
CiRA-j-1163-B: passage-3



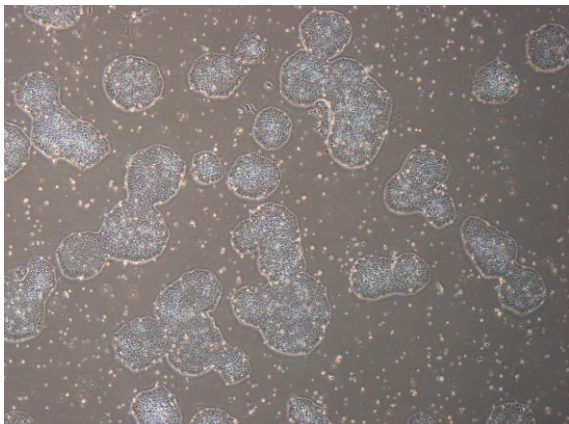
CiRA-j-1163-C: passage-3



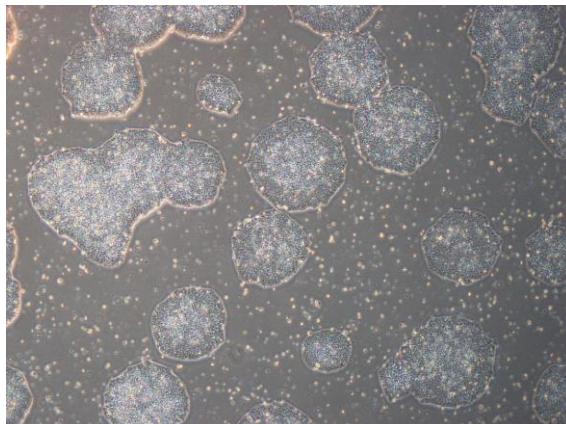
CiRA-j-1163-D: passage-3



CiRA-j-1163-E: passage-3



CiRA-j-1163-F: passage-4



(All images were captured at 4x magnification)